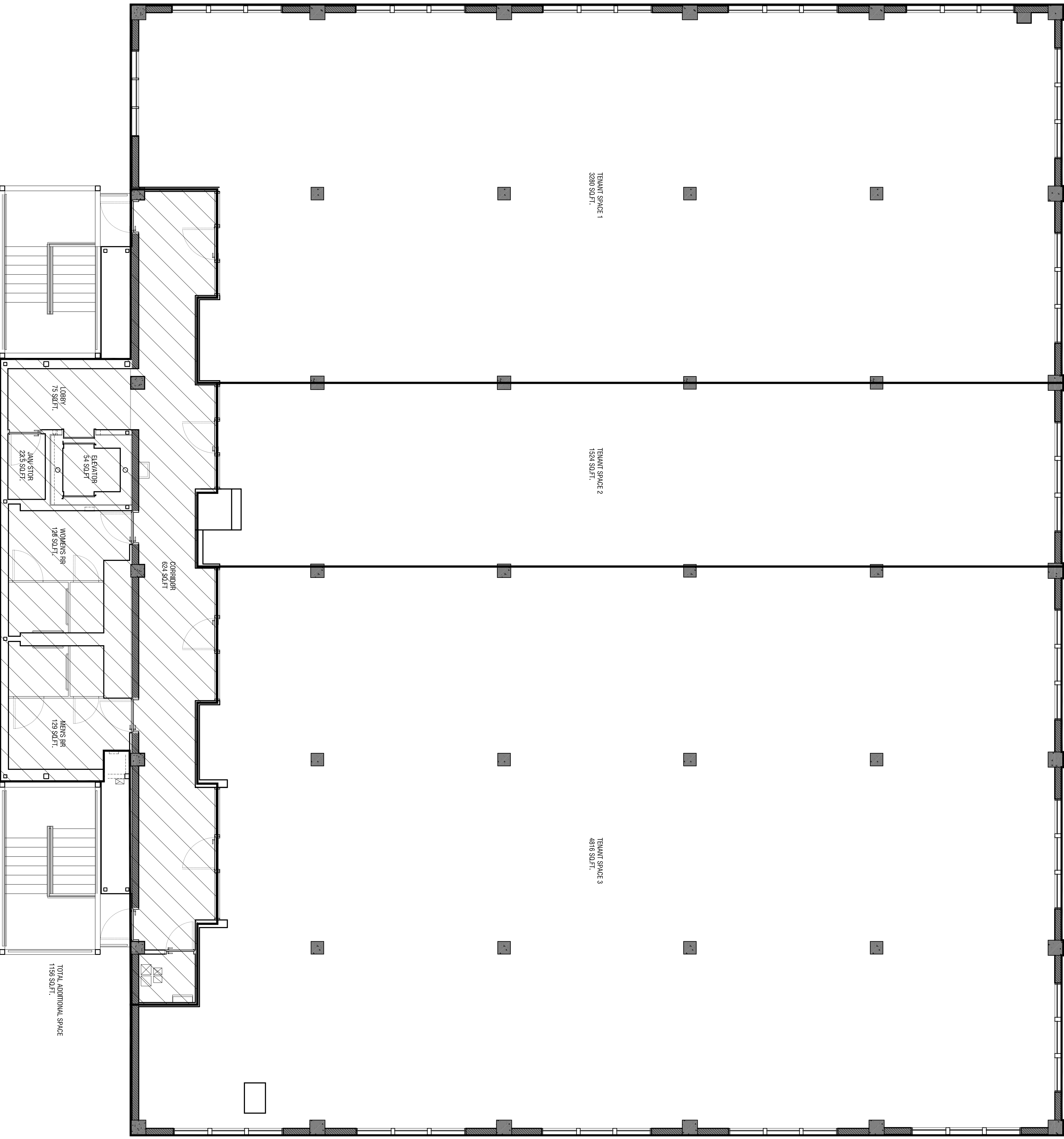


- Notes**
1. ALL DIMENSIONS ARE TO FACE OF FINISHED CONCRETE UNLESS OTHERWISE NOTED.
 2. REFER TO STRUCTURAL FOR GRID LINE DIMENSIONS.



TOTAL BASEMENT FLOOR AREA	10394 SQ.FT.
TOTAL FIRST FLOOR AREA	12021 SQ.FT.
TOTAL SECOND FLOOR AREA	112201 SQ.FT.
TOTAL BUILDING FLOOR AREA	38865 SQ.FT.

Author:
SPECHT HARMAN
 1314 Reganwood Avenue Suite 103
 Dallas, Texas 75249
 Tel: (512) 382-7338

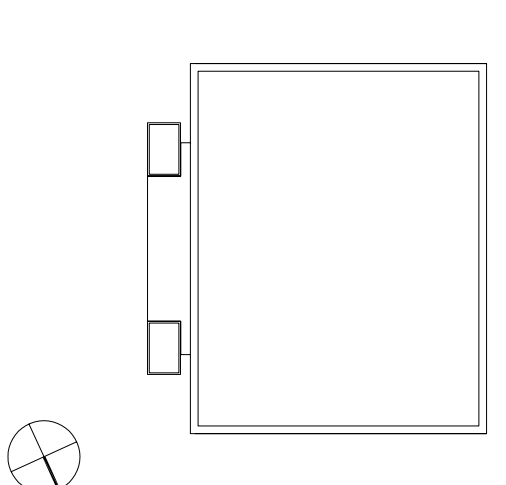
Owner:
Big Block, LP
 901 Riva Grande
 Dallas, Texas 75241
 Tel: (512) 477-2235
 Fax: (512) 477-2220

Structural Engineer:
Pickett, Kain & Associates, Inc.
 4000 West Loop South, Suite 103
 Austin, Texas 78719
 Tel: (512) 345-5338

Mechanical Engineer:
Johnson Consulting Engineers, Inc.
 2102 Blackhawk Drive, Suite 101
 Dallas, Texas 75225
 Tel: (512) 996-9550
 Fax: (512) 996-9552

Civil Engineer:
Texas Design Interests, LLC
 2000 West Loop South, Suite 203-C
 Austin, Texas 78719
 Tel: (512) 301-5388
 Fax: (512) 391-5348

Geotechnical Engineer:
Tetracon Consultants, Inc.
 5357 Industrial Oaks Boulevard, Suite 100
 Dallas, Texas 75247
 Tel: (512) 442-1122
 Fax: (512) 442-1181



Project:
Johnson Building
 2011 Smith Avenue Boulevard
 Dallas, Texas 75225
 Tel: (512) 477-2225
 Fax: (512) 477-2220

Title:
Second Level Leasing Diagram

Date:
 11/19/2007

Scale:
 3/16" = 1'

Sheet:
 A102